

Title	表紙
Sub Title	
Author	
Publisher	慶應義塾大学産業研究所
Publication year	1996
Jtitle	Keio Economic Observatory review No.No.8 (1996. 4)
JaLC DOI	
Abstract	
Notes	
Genre	
URL	<a href="https://koara.lib.keio.ac.jp/xoonips/modules/xoonips/detail.php?koara_id=AN00390376-00000008--001">https://koara.lib.keio.ac.jp/xoonips/modules/xoonips/detail.php?koara_id=AN00390376-00000008--001</a>

慶應義塾大学学術情報リポジトリ(KOARA)に掲載されているコンテンツの著作権は、それぞれの著作者、学会または出版社/発行者に帰属し、その権利は著作権法によって保護されています。引用にあたっては、著作権法を遵守してご利用ください。

The copyrights of content available on the KeiO Associated Repository of Academic resources (KOARA) belong to the respective authors, academic societies, or publishers/issuers, and these rights are protected by the Japanese Copyright Act. When quoting the content, please follow the Japanese copyright act.

# KEIO ECONOMIC OBSERVATORY

## REVIEW

April 1996

---

---

*Obi Keiichiro*

**An Equilibrium Model of Continually Heterogeneous Labor Market**

*Obi Keiichiro*

**Measurement of The Distribution of Reservation Wage Using Household Data: Price of Labor From Preference Maps for Income and Leisure**

*Evans Jr., Robert*

**United States Labor Market Regulation**

*Evans Jr., Robert*

**The Role of Fairness and Unity of Treatment in Japanese Labor Markets**

*Hayami Hitoshi, Ikeda Ayu, Suga Mikio, Wong Yu Ching and Yoshioka Kanji*

**The CO<sub>2</sub> Emission Score Table for the Compilation of Household Accounts**

*Hayami Hitoshi, Wong Yu Ching and Yoshioka Kanji*

**Application of the Input-Output Approach in Environmental Analysis in LCA**

*Hayami Hitoshi, Ikeda Ayu, Suga Mikio, Wong Yu Ching and Yoshioka Kanji*

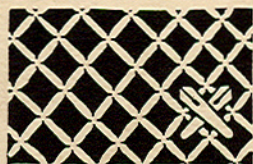
**A Simulation Analysis of the Environmental Effects of Energy Saving Housing**

*Fujiwara Koichi, Hayami Hitoshi, Ikeda Ayu, Suga Mikio, Wong Yu Ching and Yoshioka Kanji*

**Recommending the Use of Blast Furnace Cement to Reduce CO<sub>2</sub> Emission**

---

---



CALAMVS GLADIO FORTIOR

慶應義塾大学  
産業研究所

No. 8